

Rhesus macaque CD155/PVR Protein

Cat. No. CD1-CM355

Description

Source	Recombinant Rhesus macaque CD155/PVR Protein is expressed from HEK293 with His tag at the C-Terminus. It contains Asp28-Asn343.
Accession	Q0MSE6-1
Molecular Weight	The protein has a predicted MW of 35.5 kDa. Due to glycosylation, the protein migrates to 46-60 kDa based on Tris-Bis PAGE result.
Endotoxin	Less than 1EU per µg by the LAL method.
Purity	> 95% as determined by Tris-Bis PAGE > 95% as determined by HPLC

Formulation and Storage

Formulation	Lyophilized from 0.22µm filtered solution in PBS (pH 7.4). Normally 8% trehalose is added as protectant before lyophilization.
Reconstitution	Centrifuge the tube before opening. Reconstituting to a concentration more than 100 µg/ml is recommended. Dissolve the lyophilized protein in distilled water.
Storage	-20 to -80°C for 12 months as supplied from date of receipt. -20 to -80°C for 3-6 months in unopened state after reconstitution. 2-8°C for 2-7 days after reconstitution. Recommend to aliquot the protein into smaller quantities for optimal storage. Please minimize freeze-thaw cycles.

Background

CD155 is a cell surface adhesion molecule functioning in tumor cell migration, invasion, and metastasis, and not surprisingly, is also designated as a common tumor-associated antigen. CD155 is also recognized by NK cells to induce their cytotoxicity. CD155 is also commonly referred to as the "poliovirus receptor," or PVR.

Assay Data

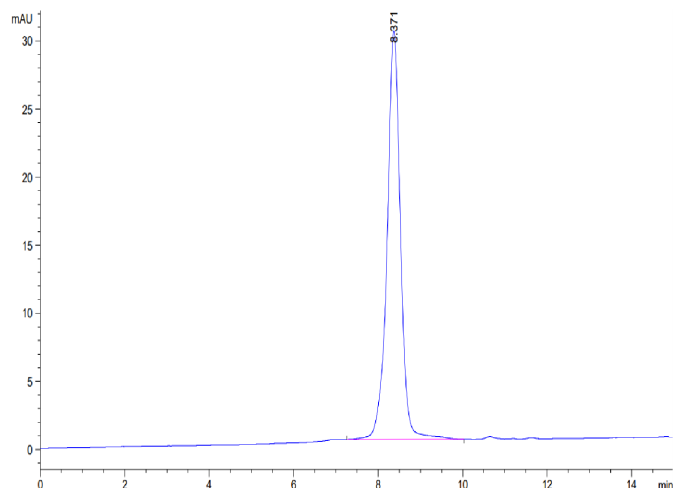
Tris-Bis PAGE



Rhesus macaque CD155/PVR on Tris-Bis PAGE under reduced condition. The purity is greater than 95%.

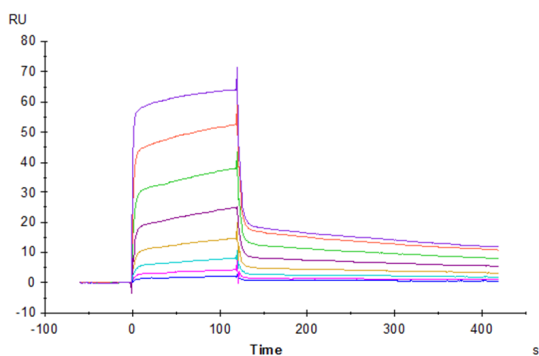
SEC-HPLC

Assay Data



The purity of Rhesus macaque CD155/PVR is greater than 95% as determined by SEC-HPLC.

SPR Data



Human DNAM-1, hFc Tag captured on CM5 Chip via Protein A can bind Rhesus macaque CD155, His Tag with an affinity constant of 0.234 μ M as determined in SPR assay (Biacore T200).